



MJCYLE

Technically Beyond Amazing

**MOTORCYCLE PARTS
& ACCESSORIES**



COMPANY PROFILE



Since 1987, MJ Cycle has been producing handlebars, forged and CNC processed products for the bicycle and motorcycle industry.

MJ Cycle has a considerable experience in various metal processing and manufacturing techniques. The OEM products span many different industries, including:

- Bicycle parts
- Motorcycle parts
- Climbing gear
- Automation equipment accessories

...and many others.

***MJ Cycle is ISO quality-certified with Quality Certification:
ISO 9001-2015***

CONTACT INFORMATION

Tel +886 (0)4 881 2221 to 4 | Fax +886 (0)4 885 2685

E-mail sales@mjcycle.com | www.MJCYCLE.com

MJ CYCLE
Technically Beyond Amazing

PRODUCTION EQUIPMENT

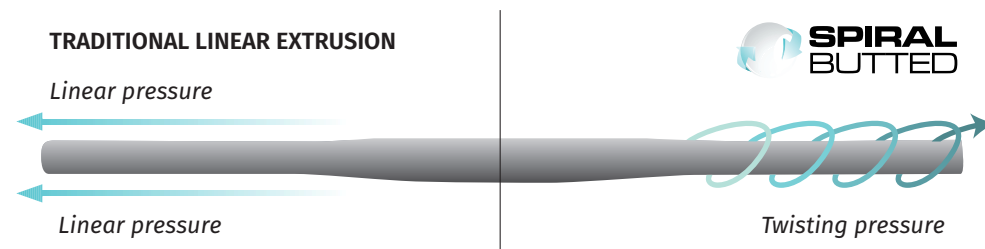
MJ CYCLE'S MAIN PRODUCTION EQUIPMENT AND PROCESSES INCLUDE THE FOLLOWING:

1. TUBE DRAWING / CONTRACTION MACHINES

Mainly used for the forming of different outer diameters of tube fittings and the double butted thickness of the tube.

SPIRAL BUTTING is MJ Cycle's unique tube processing technology. The advantage of this patented mechanical equipment is that it can replace the traditional multiple tube processes with just a single process to achieve:

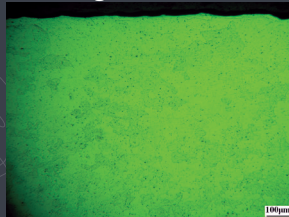
- Optimization of the grain quality of the material at the suction pipe to improve the material strength
- Reduce the processing to reduce the cost
- Less processing to reduce processing time



MATERIAL TEST REPORT : GRAIN SIZE ANALYSIS

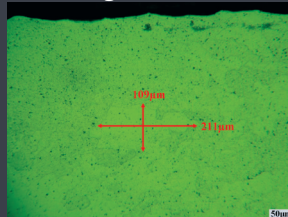
STANDARD DOUBLE-BUTTED TUBE

x100 Magnification

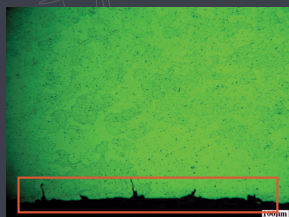


OUTSIDE WALL: Less densely packed. Note diffused grain.

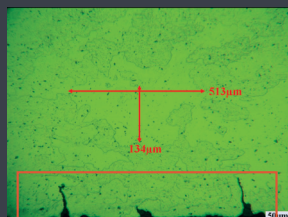
x200 Magnification



OUTSIDE WALL: Less densely packed. Note diffused grain.



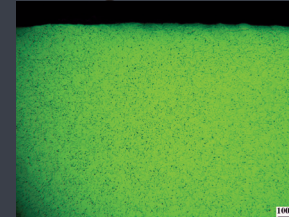
INSIDE WALL: Material broken at 100 µm.



INSIDE WALL: Material broken at 100 µm.

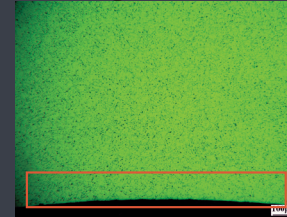
MJ CYCLE SPIRAL DOUBLE-BUTTED TUBE

x100 Magnification

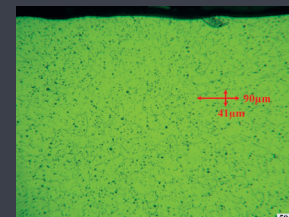


OUTSIDE WALL: More densely packed. Note amount of grain.

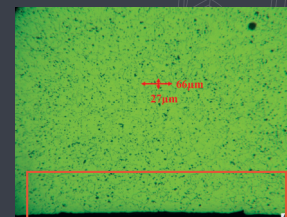
x200 Magnification



OUTSIDE WALL: More densely packed. Note amount of grain.



INSIDE WALL: Material remains together and unbroken.



INSIDE WALL: Material remains together and unbroken.

PRODUCTION EQUIPMENT

2. TUBE BENDING MACHINES

MJ Cycle has a variety of tube bending machines, whether for a cone tube or a single OD tube, there's a suitable specialized equipment for the task.

3. FORGING EQUIPMENT

Mainly for forging aluminum alloy.

4. CNC MACHINES

Our company has dozens of the latest CNC processing equipment to produce more precise and advanced surface products. Elastic production is carried out for a small number of products that do not have molds.



5. TRADITIONAL DRILLING MACHINES

MJ Cycle currently retains the traditional drilling equipment, which can achieve economical production costs for products that require simple drilling or tapping.

6. GRINDING AND POLISHING MACHINES

The grinding and polishing process is mainly used to remove the joint line after the original material is formed as well as eliminating surface flaw after the forming process to give the product an excellent surface quality.

PRODUCTION EQUIPMENT

7. SHOT-PEENING AND SAND-BLASTING EQUIPMENT

These are used to eliminate the internal stress of the material and also to modify the surface finish of the product.

8. LASER-ETCHING MACHINE

Used for logos, graphics and other information etched on the product.

9. DECALS / LABELLING

Decal application using different types of decals.

10. PACKING AND ASSEMBLY

According to customer requirements

In addition to the in-plant process, MJ Cycle has a considerable technical know-how and experience of other metal processes, that gives it the ability to assist customers with proper process integration.



DOUBLE-BUTTED TECHNOLOGY

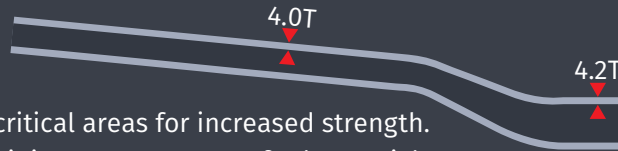
DOUBLE-BUTTED HANDLEBARS



Comparative illustration between double-butt and plain-gauge

Double-butt

More materials in critical areas for increased strength.
Less materials in minimum-stress areas for less weight.

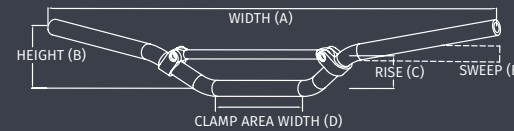
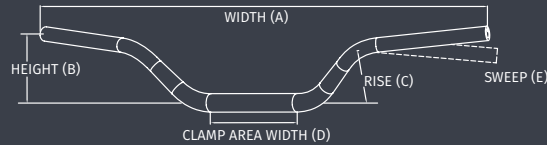
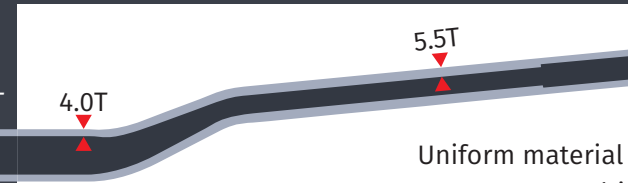


ADVANTAGES OF MJ CYCLE'S DOUBLE-BUTTED TECHNOLOGY

A handlebar experiences different stresses and weight loads throughout its length. We pinpoint and calculate the precise amount of stresses a particular area of the handlebar experiences, and add or shave off materials, resulting in a stronger, stiffer, and more durable handlebar than a plain-gauge handlebar, yet with less weight.

Ordinary plain-gauge

Uniform material regardless of the amount of stress resulting in too much extra weight.



28.6 DOUBLE-BUTTED TAPERED SERIES

Double-butt 2014 / 6061 / 7075 alloy. Bar bore: 28.6mm

FITS MODEL	ITEM NO.	A	B	C	D	E
UNIVERSAL	MB-01	810	65	53.4	210	39.5
MINI	MB-02	750	100	85.6	172	55
YAMAHA	MB-03	803	92	56	210	57
HONDA CR-LO	MB-04	802	65	60	200	57
SUZUKI RM	MB-05	800	60	52.5	222	57.3
HONDA CR-HI	MB-06	795	95	70	205	57
KAWASAKI KX	MB-07	798	74	53	200	57
ATV	MB-08	795	95	70	205	62



HANDLEBARS IN CARBON FIBER

All handlebars can be made with carbon fiber-wrapped alloy for a high-tech look.

22.2 ATV SERIES

Double-butt 2014 / 6061 / 7075 alloy. 4.2T. Bar bore: 22.2mm

FITS MODEL	ITEM NO.	A	B	C	D	E
ATV MINI	MB-09	735	105	98.6	222	66.3
YAMAHA	MB-10	775	150	120	190	100
BANSHEE	MB-11	770	160	120	200	98
HONDA	MB-12	790	142	105	200	90
FOUTRAX	MB-13	770	120	115	180	92
HONDA TRX	MB-14	785	140	105	155	100
400EX	MB-15	775	120	95	205	68
SUZUKI QUAD	MB-16	790	140	106.9	180	67.6
RACER	MB-17	790	146	124.7	210	96.8
YAMAHA	MB-18	773	110	87	212	97

22.2 MOTO-X SERIES

Double-butt 2014 / 6061 / 7075 alloy. 4.2T. Bar bore: 22.2mm

FITS MODEL	ITEM NO.	A	B	C	D	E
MINI	MB-19	710	100	93.9	175	59.7
YAMAHA YZ	MB-20	800	90	60.4	170	52.4
HONDA CR-LO	MB-21	800	70	51.1	190	58
SUZUKI RM	MB-22	800	60	52.2	222	57.3
HONDA CR-LO HI	MB-23	810	90	71.6	218	68.5
KAWASAKI KX	MB-24	800	80	60.4	170	55.7

QUALITY CONTROL / TESTING EQUIPMENT

QUALITY CONTROL EQUIPMENT:

1. CMM



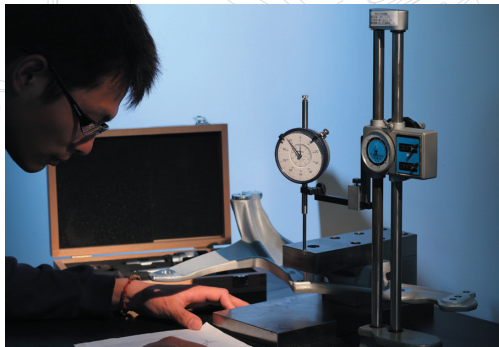
2. Fluorescent inspection

3. Projector

4. Hardness machine

5. EC current machine

6. Altimeter

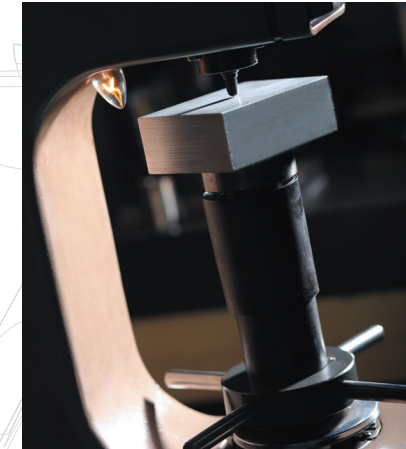


7. Internal and external diameter digital centimeter card / mechanical internal and external mirror centimeter card

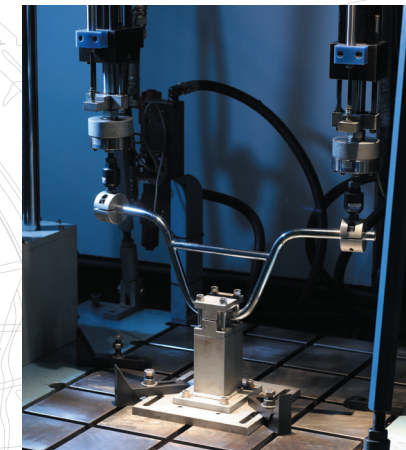
8. Thick gauge

TESTING EQUIPMENT:

1. Universal testing machine



2. Fatigue testing machine



HOW IT WORKS

During the development of the product, MJ Cycle regularly conducts process evaluation and develops quality specifications to ensure that the production process meet strict quality standards. Before production, the Standard Operating Procedures (**SOPs**) required for each production operation are also formulated to ensure stable production quality.

In order to optimize customers' costs and provide superior quality assurance, MJ Cycle will provide shipping reports according to the nature of the product or customer requirements when shipping.

The belief is quality and service are always necessary for the sustainable operation of the company.

TEAMWORK

MJ Cycle consists of different teams with specialized divisions of responsibilities that work closely together to form an effective organization. From day-to-day communications, product development, internal and external production process integration and management, quality control all the way to delivery.

WHAT CAN YOU AS A CUSTOMER EXPECT FROM MJ CYCLE?

MJ Cycle strives to consistently provide:

- Clear and prompt communication
- Excellent and stable product quality throughout
- Efficient and friendly service from shipping to after-sales